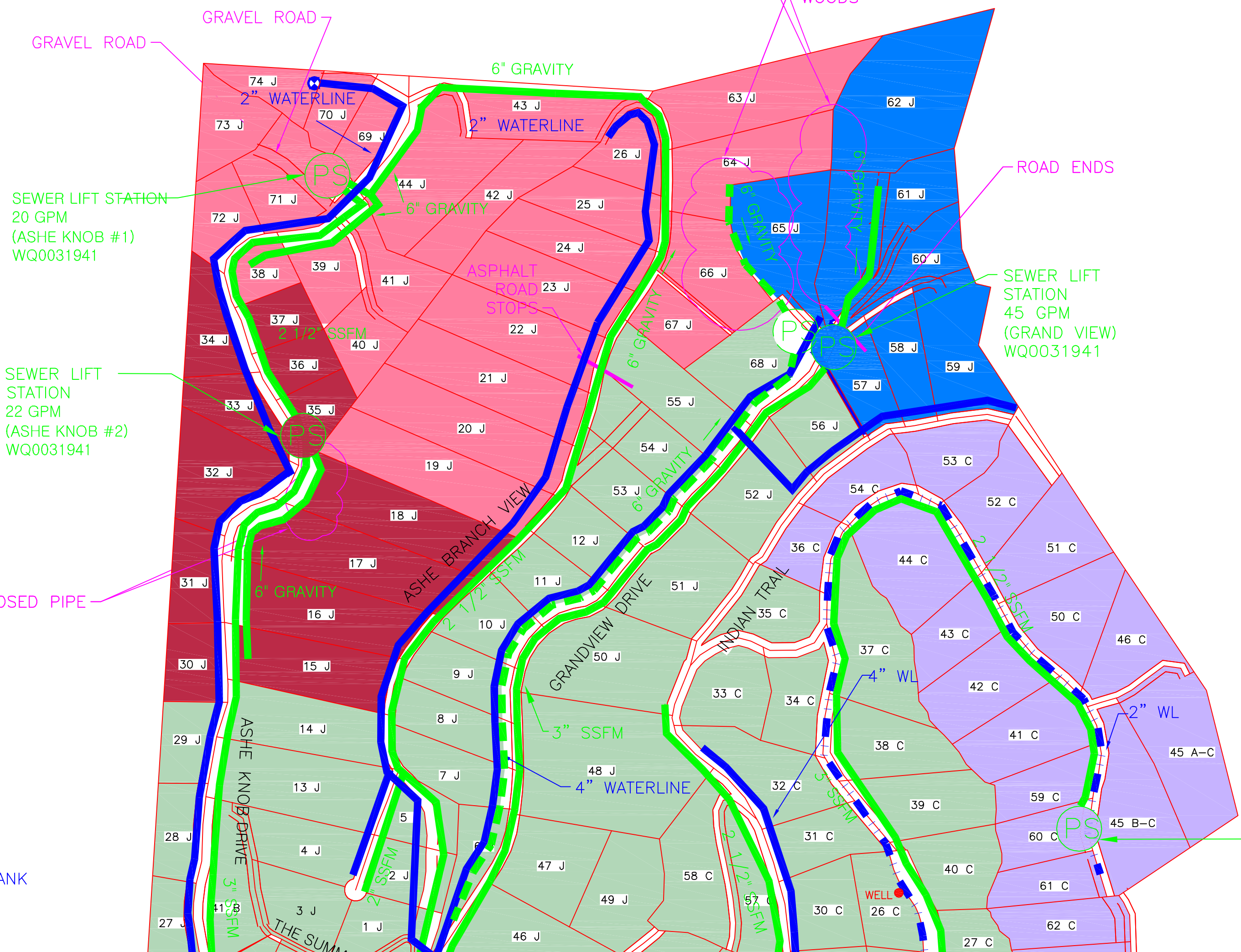


5,470 LF 6" GRAVITY SS  
FIVE SEWAGE PUMP STATIONS  
(2) 20 GPM PER MINUTE  
(1) 22 GALLON PER MINUTE  
(1) 45 GALLON PER MINUTE  
(1) 25 GALLON PER MINUTE  
ALL WITH GRINDER TYPE DUPLEX PUMPS  
AUDIBLE AND VISUAL ALARM WITH PORTABLE  
GENERATOR RECEPTACLE WITH TELEMTRY  
6,235 LF OF 2" FM  
5,925 LF OF 3" FM  
390 LF OF 4" FM  
WQ0031941 (CERTIFIED 1-29-08)  
SERVING PHASE II OF THE RIDGES AT MOUNTAIN HARBOR



LEGEND:

- INSTALLED, CERTIFIED WATER LINE
- INSTALLED, UNCERTIFIED WATER LINE
- INSTALLED, UNCERTIFIED SEWER LINE
- UNINSTALLED, PERMITTED SEWER LINE

1,175 LF OF 6" GRAVITY SS  
436 LF OF 8" GRAVITY SS  
70 GPM SEWAGE PUMPING STATION WITH  
DUPLEX GRINDER PUMPS, ON-SITE AUDIBLE  
AND VISUAL HIGH WATER ALARMS AND A QUICK  
CONNECT FOR A PORTABLE EMERGENCY POWER  
GENERATOR AND TELEMTRY  
865 LF OF 3" FM  
WQ0032395  
SERVING MOUNTAIN HARBOUR DRIVE AREA

10,405 LF OF 6" GRAVITY SS  
2,340 LF OF 8" GRAVITY SS  
120 GPM DUPLEX PUMP STATION  
WITH ALARM AND GENERATOR  
600 LF OF 4" FORCE MAIN  
WQ0032183  
SERVING PINNACLE AT  
MOUNTAIN HARBOUR  
PHASE 1

4,485 LF OF 6" GRAVITY SS  
80 GPM, 200 GPM, 225 GPM  
WITH DUPLEX PUMPS, ON-SITE AUDIBLE AND  
VISUAL HIGH WATER ALARM  
TELEMTRY AND PERMANENTLY INSTALLED ON  
SITE GENERATORS WITH TRANSFER SWITCH.  
1,525 LF 4" FM  
4,800 LF 6" FM  
4,325 LF 8" FM  
WQ0031202 (CERTIFIED 4-27-2007)  
PHASE I RIDGES AT MOUNTAIN HARBOR

